

Makita[®]

18V2 Brushless AWS Backpack Vacuum

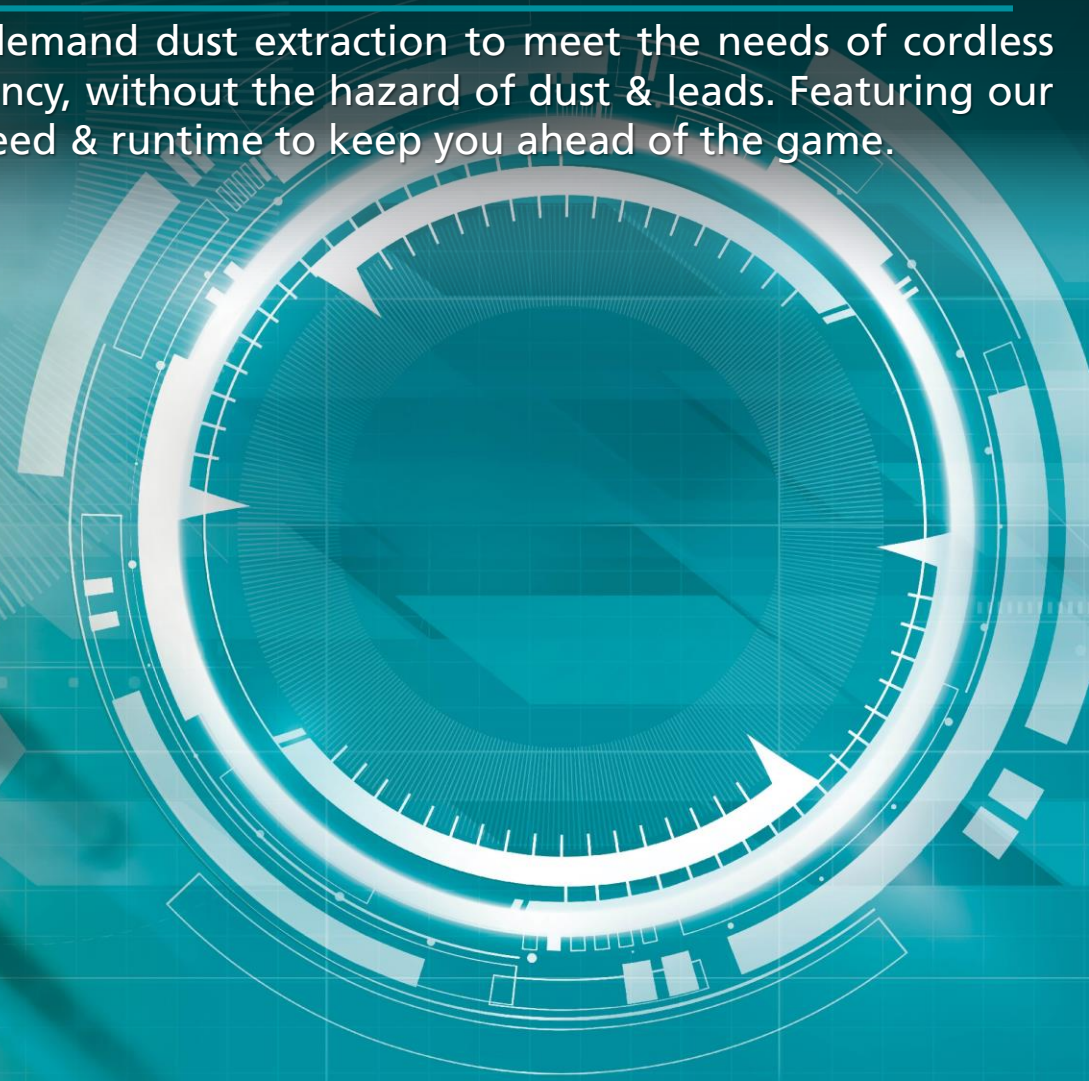
DVC265ZXU



18Vx2 18V + 18V 36V
BRUSHLESS

WIRELESS, ON DEMAND, DUST EXTRACTION

Makita's Auto-start Wireless System (AWS) has modernised on-demand dust extraction to meet the needs of cordless power tool users. AWS allows you to work with maximum efficiency, without the hazard of dust & leads. Featuring our legendary cordless technology, the AWS range has the power, speed & runtime to keep you ahead of the game.



Product Overview



18Vx2 18V + 18V 36V
BRUSHLESS

AWS
Auto - start Wireless System

Product Specification Sheet



- **Auto-start Wireless System** – automatically starts the vacuum with the tool for on demand dust extraction
- **HEPA Rated Filter** – provides a high filtration rate of 99.97% at 0.3 microns.
- **18Vx2 Power** – delivers AC like power
- **2 Stage Suction** – allows you to optimise your performance and runtime based on the application
- **Comfortable Backpack** – suited for extended periods of use
- **Lightweight Design** – Weighing just 4.4kg including batteries

Voltage	18Vx2
Max. Sealed Suction	11kPa
Max Air Volume	1.8m ³ /min (30L/s)
Continuous runtime (2xBL1850B)	40 min / 65 min
Dust Capacity	2.0L
Suction Power	85W / 45W
Overall Length	230mm
Weight	4.4kg

Advantages

Efficiency



2 Stage suction for optimal runtime and suction for the application

Ergonomics



Comfortable harness for long periods of use and mobility

Convenience



Auto - start Wireless System

Provides on demand dust extraction when paired with compatible cordless power tools

Power



18Vx2 Technology combined with Brushless Motor delivers superior performance

Advantages



The DVC265 can pair to a range of 18V and 18Vx2 cordless tools thanks to the new Auto-Start Wireless System.

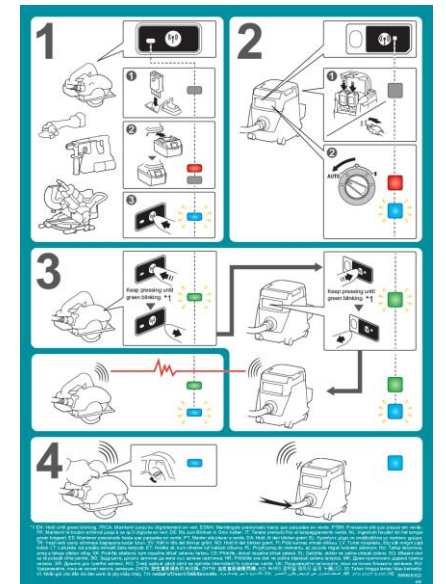
This feature enables automatic start up of the vacuum when the trigger is pulled on the tool for on demand dust extraction.

The DVC265 will also run for several seconds after the trigger has been released to pull any remaining material completely through the hose.



How to pair your tools

1. Set the DVC265 slide switch to "AUTO - ON."
2. Press and hold the  button on the tool for 3 seconds until the light flashes **Green**.
3. Press and hold the  button on the DVC265 for 3 seconds until the light flashes **Green**.
4. Lights will turn to flashing **Blue** when the two units are paired.



[Click Here for instructional video – Pairing Bluetooth Tools](#)

Overview Video



Our Range

	Makita DVC265ZXU	Makita DVC864LZ
		
Voltage	18Vx2	18Vx2
Max. Sealed Suction	11kPa	9.8kPa
Max Air Volume	1.8m ³ /min (30L/s)	2.1m ³ /min (35L/s)
Continuous runtime (2xBL1850B)	40 min / 65 min	40 minutes
Dust Capacity	2L	8L
Suction Power	85W / 45W	90W
Overall Length	230mm	366mm
Weight	4.4kg	8.4kg

Accessories

Standard Accessories		
Filter Bag (1pc)		-
Hose 28mm x 1.5m		A-34235
Front Cuff 22		417765-1
Joint 22-38		195548-6
Hose Band		166116-2

Optional Accessories		
Re Useable Cloth Filter Bag		197898-5
Filter Bag (10pcs)		197902-0
Bent Pipe Assembly		123677-5
Telescopic Pipe		123584-2
Floor Nozzle		123486-2



AWS

Auto - start Wireless System

Switch on
the tool



Vacuum cleaner
is activated

**WIRELESS
ON DEMAND
DUST EXTRACTION**

